

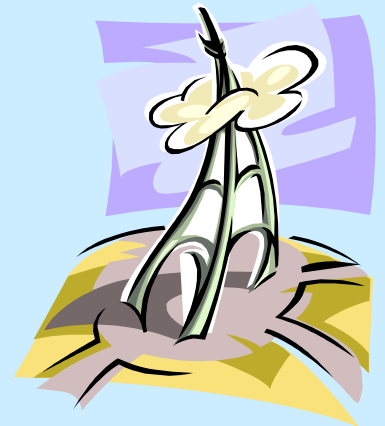


Final Update Meeting

March 27, 2014

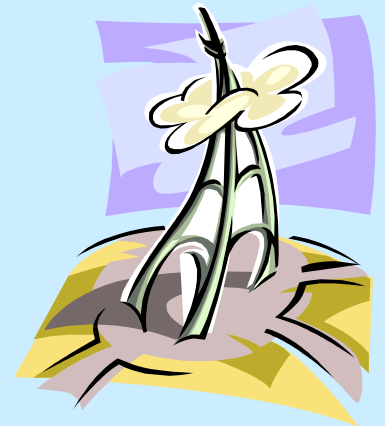
Agenda

- Fundraising Update
- Finance Update
- Travel information
- Activity Outline
- Housekeeping and Paperwork



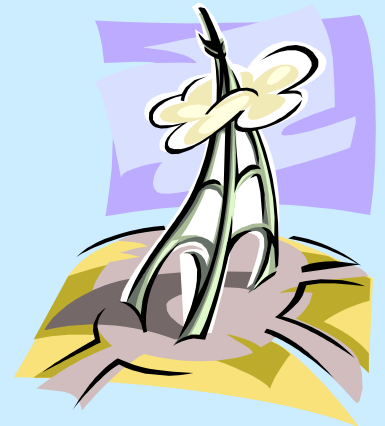
Fundraising Update

- Flower Power!.... or not...
- Coffee Orders



Finance Update

- Where we are now
 - Final budget 😊
 - Final cheque is due by Friday March 28th
 - Please make payable to St.Paul
 - See your individual balance owing



Travel Information

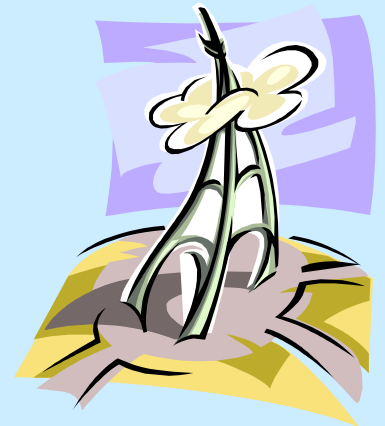
- Departure
 - Friday April 4th at 7:00pm from the **OTTAWA INTERNATIONAL AIRPORT** AC8988
 - Please meet at the airport **no later than 4:30pm**
 - Arrive in Montreal at 7:41pm
 - Depart Montreal 8:55pm – AC0870
 - Arrive in Paris 9:35am (flying time 6h 40min)
 - Motorcoach to school

Travel Information

- Return
 - Friday April 18th
 - Depart Paris at 11:00am– AC0881
 - Arrive in Toronto at 1:00pm (flying time 8h)
 - Depart Toronto at 3:10pm – AC0456
 - Arrival at **Ottawa International Airport** – 4:13pm
 - Arrive at airport **no later than 3:45pm**

Travel Information

- Travel Insurance:
 - RBC Insurance
 - Youth Student Package Insurance
 - Group Policy #G00061168



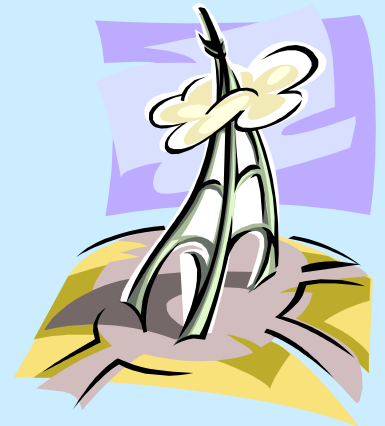
Travel Information

- Travel Insurance:
 - What is covered:
 - Cancellation
 - Medical (Unlimited)
 - Baggage (\$1000/\$400)
 - See link on Mme Gosbee's website!!



Travel Information

- Travel Insurance:
 - In case of emergency:
 - You MUST contact Mme Bosc or M Desjardins IMMEDIATELY if medical assistance is required!



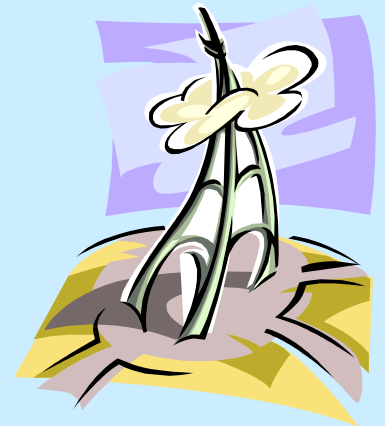
Travel Information

Rules and Requirements:

- **Baggage Allowance**
 - Limit of 1 piece of checked luggage & 1 carry-on
 - Checked luggage cannot exceed 158cm and 23kg
 - Carry On cannot exceed 23x40x55cm and 10kg
 - Place a sticker inside your suitcase with name, address & phone
- **Recommended Currency**
 - Currency should be in Euros
 - Have an ATM card – international standards
 - Traveller's cheques should be in Euro
- **Baggage Tags**
 - 2 baggage tags will be given in advance for suitcase and carry on

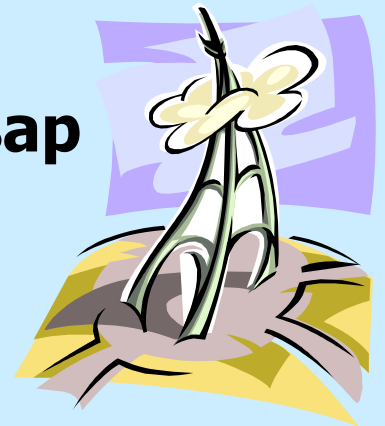
Travel Information

- Meal Service
 - provided on flight
- Seat Selection
 - Boarding passes and seats will be assigned upon check-in



Travel Information

- Documents
 - Passport
 - Carry passport
 - Copy of passport in luggage, with teachers, at home, at school, with emergency contact
 - Permission to travel
 - **Form available tonight, return asap**
 - Requires signature of parents



Travel Information

- Specific baggage restrictions
 - Checked Baggage Suggestions
 - use hard-shell baggage
 - remove labels from previous flights
 - do not pack fragile objects
 - label the **inside** and **outside** of all baggage with your name, permanent address and destination address



Travel Information

- Specific baggage restrictions
 - 55 cm (l) x 35 cm (w) x 25 cm (h), 12kg
 - Carry On Baggage Suggestions
 - Nothing sharp!
 - If you must carry a liquid
 - Take a 1L clear freezer bag
 - Place in this bag all liquids and similar products **of which each container must not exceed 100mL (3floz) max.**
 - Prescription medications require a doctor's note, prescription etc.
 - Keep in your carry-on:
 - valuable items: keys, mobile phone (switched off), passport and ID, important documents, money, valuables, jewelery, etc.,
 - fragile objects: camera, IT hardware (switched off), paintings, crochery, etc

Travel Information

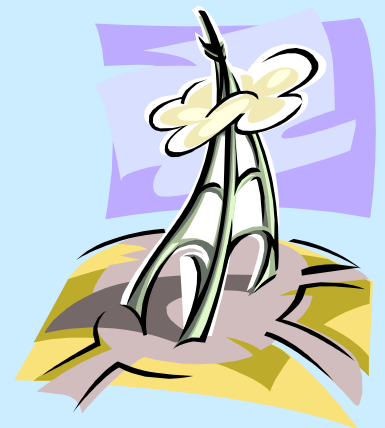
- Specific baggage restrictions
 - Food products of animal origin
 - Food oils
 - Perfumes and aerosols
 - Liquids in the cabin

Travel Information

- Prohibited goods
 - lighters and lighter fuel
 - batteries with electrolytes
 - fireworks, firecrackers, flares, etc.
 - camping stoves
 - paint, varnish, lacquer
 - toxic, infectious or radioactive materials
 - chemical pructs, fertilizers, herbicides, persticides, etc.
 - paint removers, bleach, chlorine and detergent
 - flammable liquids such as fuel, thinner, solvent, acetone (nailpolish remover)
 - mercury-based thermometers, barometers

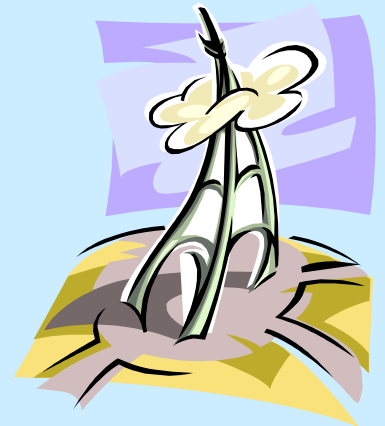
Reminder of Expectations

- Code of Conduct
- Expectations
- Cosequences



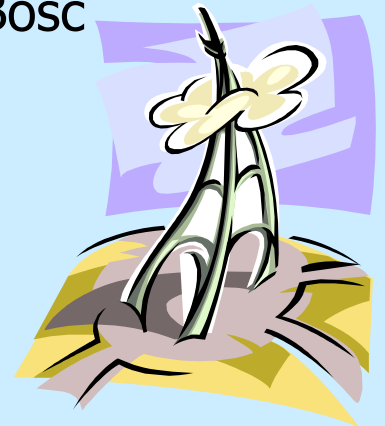
Reminder of Expectations

- You are representing St.Paul, OCSB, Ottawa and Canada!
- Think carefully about how you share your experience!



Arrival

- Saturday April 4th/ Sunday April 5th
 - Arrival and family time
 - Group mass option
 - Saint Michel des Batignolles
 - 10:30am
 - Coordinate with host families and Mme Bosc



Week 1

- Monday:
 - morning French class at school
 - special class / with twins
 - Musée du Louvre?
 - Evening: formal welcome 'dinner' school – dress NICELY!!



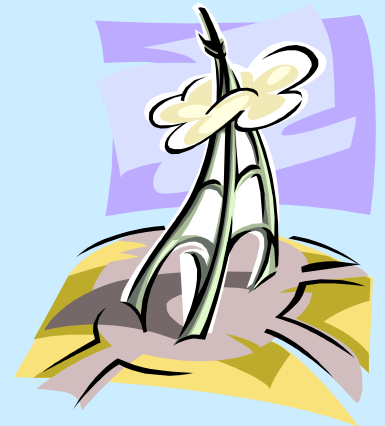
Week 1

- Tuesday-Wednesday:
 - Juno Beach / Caen
- Thursday:
 - Visit Paris
 - Eiffel Tower, Bateaux Mouches, Notre Dame, etc.
- Friday:
 - Château Versailles



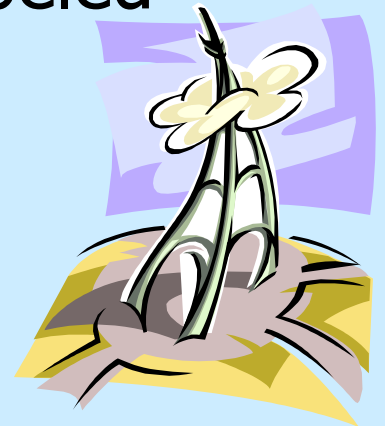
Week 2

- Family Time
- Use emergency contact # ONLY if there is a problem!
- Friday April 18th :
 - Meet at the school by **7:00am**



Packing lists

- Please see attached
- Note:
 - Students are responsible for their own belongings including personal electronics
 - All belongings should be clearly labeled

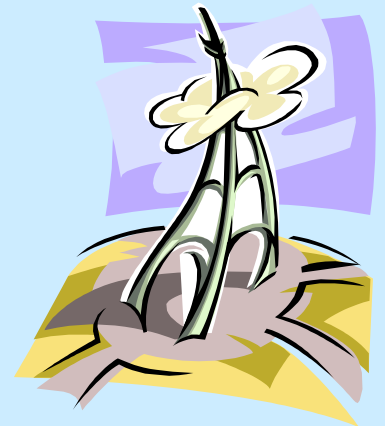


Important travel info

- Dress code
- Being a polite guest

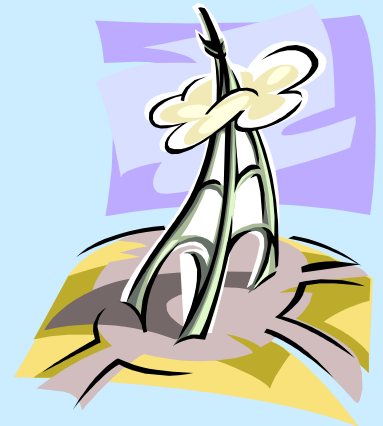
Get up, speak up, turn down the volume 😊

- If you don't feel comfortable
- If you're in trouble



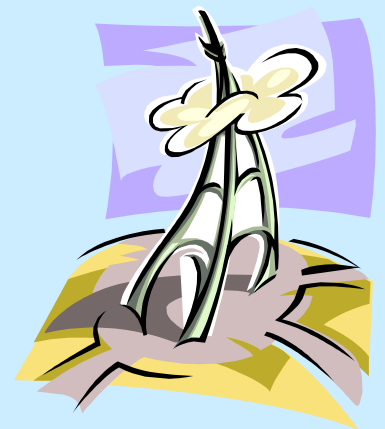
Housekeeping and Paperwork

- Please ensure that you have a photocopy of your child's:
 - Passport
 - Birth Certificate
 - Health Card
- Please also provide them with a copy to keep in their luggage



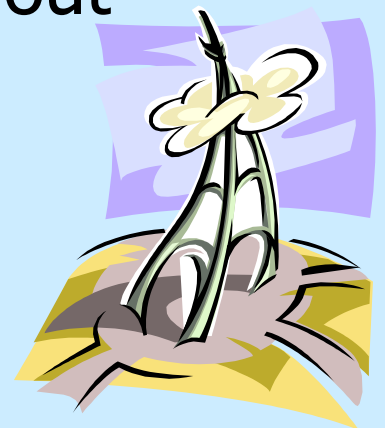
Housekeeping and Paperwork

- Please see me if you have any outstanding paperwork!!!
- E-mail contact for parents is needed, please see me if you are not receiving messages



Contact Information

- While in Paris
 - Mme Bosc:
 - 011-33-6-85-65-93-92
 - 011-33-6-85-65-93-97
 - M Desjardins-Sissoko: will be sent out using e-mail distribution list
 - #s will also be available through the school



Questions

- ?????????????

